

# Quick Installation Guide of ARS-2160/ARS-2320 v1.3

## Section 1 Introduction

### 1.1 Overview

ARS-2160/ARS-2320 is a SCSI-to-SATA II bridge. Through its connection to a SCSI host 68-pin connector the bridge can turn a 2.5" hard drive into one with LVD SCSI efficiency. Thus, you can enjoy the high performance of SCSI.

### 1.2 Specification

Temperature:

Operation: 0°C to 70°C / Storage: -40°C to 85°C

Humidity: 15% to 90%

Size: 14.6 cm(L) x 10.1 cm (W) x 2.5cm (H)

### 1.3 Connectors

CN2: 68-pin SCSI connector

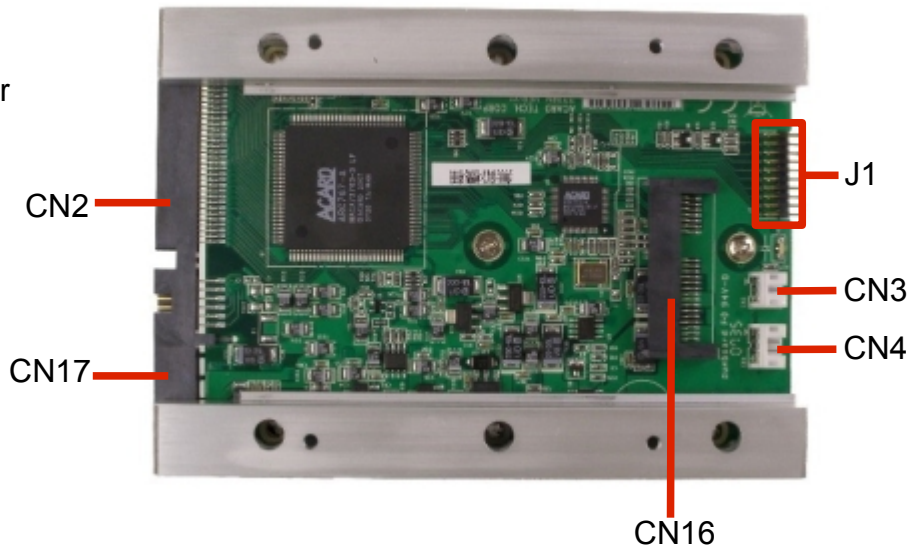
CN17: 4-pin power connector

CN16: SATA II integrated connector

CN3: reserved

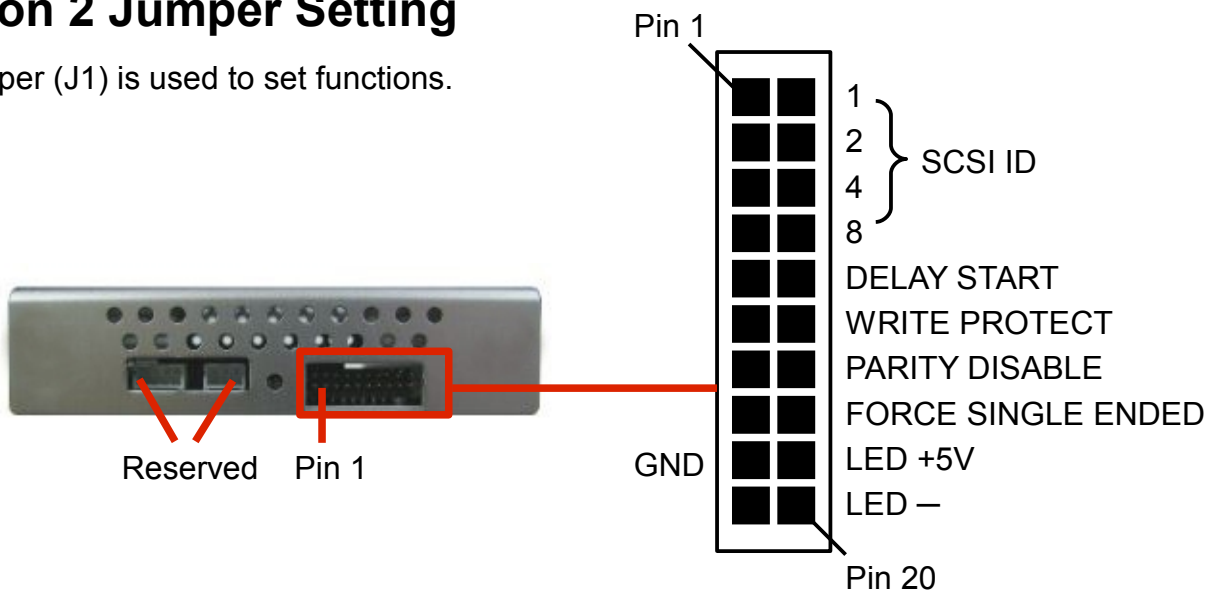
CN4: reserved

J1: jumper



## Section 2 Jumper Setting

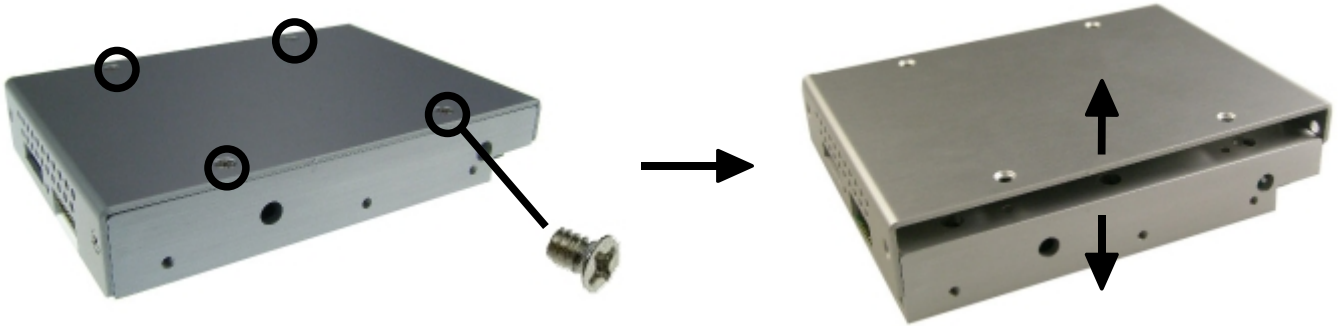
The jumper (J1) is used to set functions.



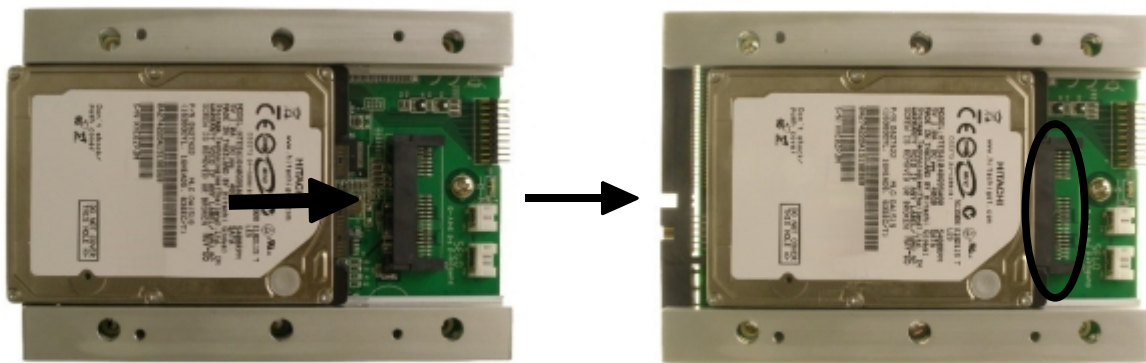
## Section 3 Installation

Here we simply take ARS-2160 to demonstrate.

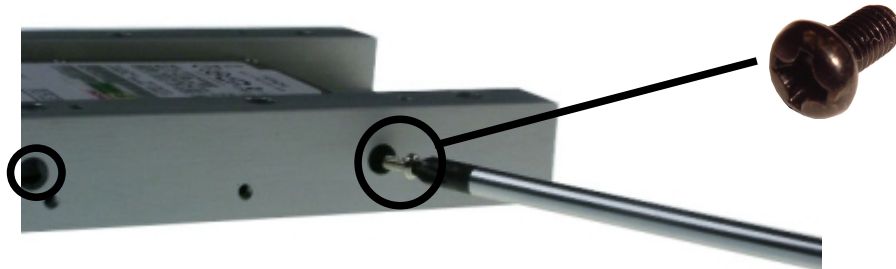
1. Remove the 6 screws of ARS-2160 and open the upper case.



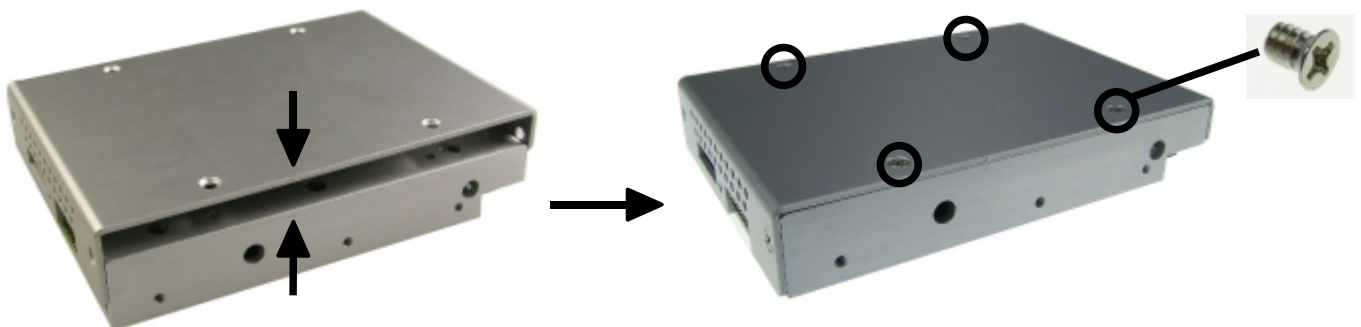
2. Slide the 2.5" SATA hard drive along the sides of ARS-2160 till it connects CN16.



3. Fix the SATA hard drive to the two sides of ARS-2160 with the enclosed 4 screws.



4. Return the upper cover of the bridge and fix with the 4 screws.



5. Set the jumper, and connect ARS-2160 to SCSI host controller via a SCSI cable. Then provide power to ARS-2160 with a 4-pin power core.